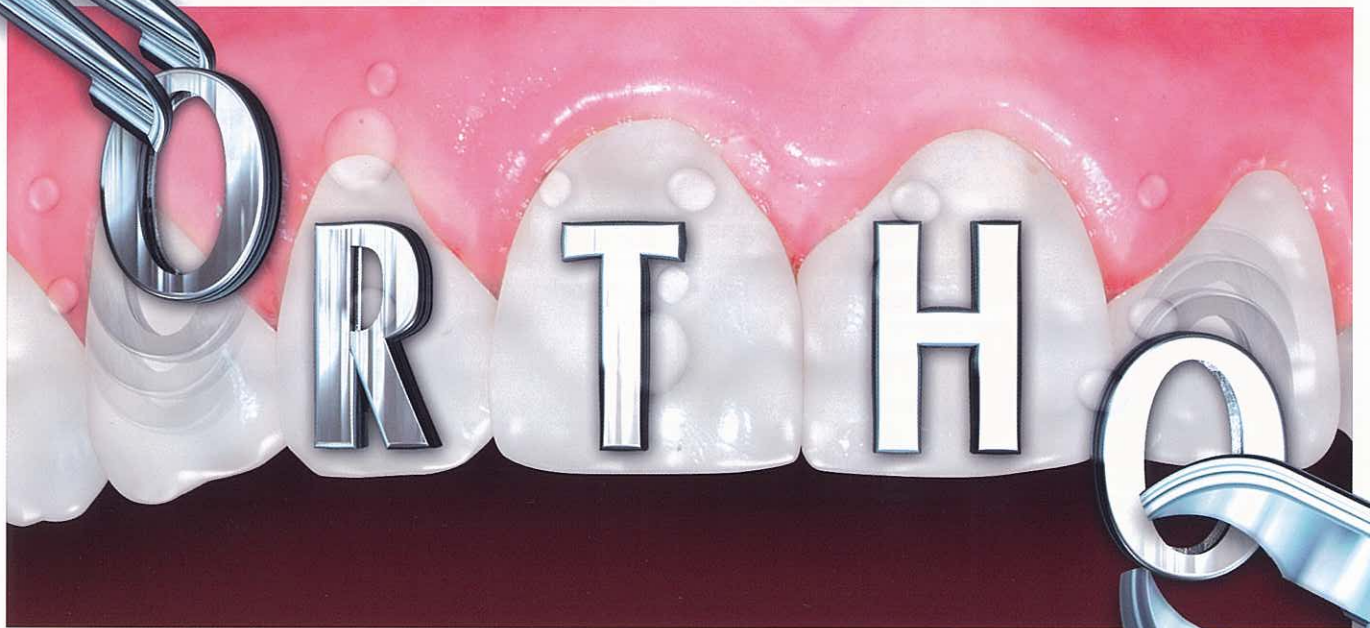


Easy on



Easy off

GC Fuji ORTHO

A Range of Glass Ionomer Cements for Orthodontic Bonding

GC

The GC Fuji ORTHO range:

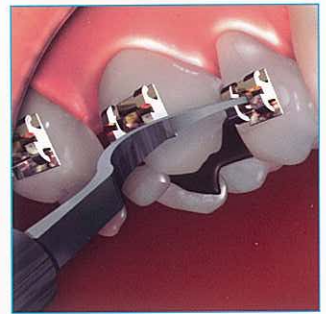
The easier, safer alternative to composites

Orthodontic bonding cements should meet three key criteria: they should be easy to apply, they should attach brackets and bands onto the teeth securely throughout the treatment, and they should be easy to remove. But that's not all. Safety in use is just as important, so at each step the cement should not damage teeth, either during application, during the course of treatment or upon removal.

EASY ON

No acid etching so no damage to enamel

GC Fuji ORTHO cements have strong, intrinsic chemical adhesion to enamel. Acid etching is not required so there is no need to damage the teeth to gain strong adhesion. If extra bond strength is required, GC Cavity Conditioner is available which cleans and conditions without damaging enamel.



Bonds in a moist environment

The chemical adhesion of the GC Fuji ORTHO cements actually needs a moist environment in which to work, so there is no need to waste time or materials trying to maintain a dry field.

Easy On... Secure and Safe... Easy Off

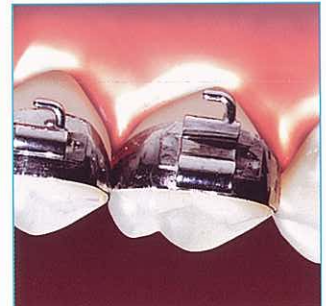
To overcome the problems related to the use of composite resin cements, GC, the world leader in glass ionomer technology, created resin-reinforced glass ionomer cements especially for orthodontics. Both self-curing GC Fuji ORTHO and light-curing GC Fuji ORTHO LC are resin-reinforced glass ionomer cements that offer the bonding strength of composite resin with the ease of use and the long term safety of fluoride-releasing glass ionomer.

Now, to make orthodontic bonding of bands and appliances even easier and quicker, there is a new addition to the range. Self-curing GC Fuji ORTHO BAND is a resin-reinforced glass ionomer cement in a PASTE formulation which is presented in a unique Paste Pak dispenser. Compared to composite resins, the GC Fuji ORTHO range of cements has the following advantages:

SECURE AND SAFE

Sufficient bond strength, effectively maintained

The bond strength of the resin-reinforced glass ionomer used in GC Fuji ORTHO cements is more than sufficient to retain brackets, bands and appliances. The naturally moist oral environment also helps to maintain its adhesive strength, ensuring they are attached securely throughout the duration of placement.



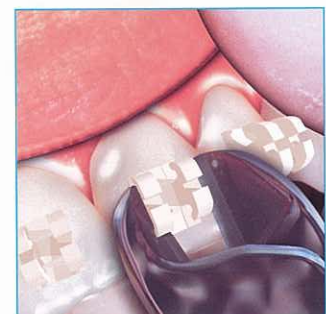
High fluoride release

Ongoing fluoride release and uptake offers continued protection from demineralization through the course of treatment.

EASY OFF

No damage to enamel, easy to clean away

Despite the impressive adhesive properties of GC Fuji ORTHO cements, proven in many clinical studies, band or brackets can easily be removed from the tooth surface when the treatment is completed. The enamel is not damaged and any residue is easily removed by polishing.



GC Fuji ORTHO

- Self-curing resin-reinforced glass ionomer.
- Powder/liquid presentation.
- Bonds metal and porcelain brackets and bands as well as acrylic appliances.
- Takes only 30secs to mix. Working time 3mins.
- Setting time of between 5mins 30 secs to 7mins, during which levelling wires can be placed.

GC Fuji ORTHO LC

- Light-cured resin-reinforced glass ionomer.
- Bonds metal and porcelain brackets, as well as acrylic appliances and metal bands.
- Available in both powder/liquid and capsules.
- Only 30secs to mix (10secs for capsules). Working time 3mins 15secs.
- Sets in just 20 to 40secs. Levelling wires can be inserted immediately after light curing.

NEW GC Fuji ORTHO BAND Paste Pak

The latest addition to the range is GC Fuji ORTHO BAND the first orthodontic cement to be made available in the unique Paste Pak dispenser which improves even further the easy on, easy off benefits of using GC Fuji ORTHO cements.

- Self-curing resin-reinforced glass ionomer.
- Bonds orthodontic bands and appliances that are retained with stainless steel crowns, such as Herbst or expansion appliances.
- Available as a PASTE in a special, replaceable cartridge called a Paste Pak that fits into its own unique dispenser to form a complete bonding system with faster and more accurate dispensing.
- Ensures that when mixed together, which takes just 15secs, they form a cement with no air bubbles and of exactly the right consistency (film thickness of just 3 μ) for optimal workability and clinical performance.
- Working time is 3mins 30secs and setting time is 3mins.
- The final colour of the paste is 'blue' which makes identification of residual cement after debonding much easier and quicker.



GC Fuji ORTHO BAND Paste Pak cartridge and dispenser. The two pastes are dispensed automatically in the correct ratio.



NO ACID ETCHING



NO DAMAGE TO ENAMEL

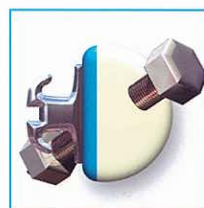
EASY TO USE, SECURE AND SAFE FROM START TO FINISH



STRONG CHEMICAL ADHESION



BONDS IN MOISTURE



LONG-LASTING, SECURE BOND



HIGH FLUORIDE RELEASE



EASY TO REMOVE

GC Fuji ORTHO

A Range of Glass Ionomer Cements for Orthodontic Bonding

Physical Properties	Fuji Ortho LC	Fuji Ortho	Fuji ORTHO BAND Paste Pak
Powder/Liquid ratio or Paste/Paste ratio (g/g)	3.0/1.0	3.0/1.0	2.0/1.0
Working time (min. sec.)	3'15"	2'50"	3'30"
Net Setting time (min. sec.) (37°C)	Light Cure: 20s"	3'00"	3'00"
Consistency (mm)	30	29	29
Compressive strength (MPa) 24hr	214	156	110
Shear bond strength (MPa) Bovine enamel 24 hr	23	22	8
Film thickness	24	23	3
Source:	Internal data, GC Corporation		

GC Fuji ORTHO LC



Powder/Liquid

Intro Pack:

15g powder, 6.8ml liquid and accessories

Refill: 40g powder/6.8ml liquid

Capsules

50 capsules (mixed volume per capsule 0.10ml)

Accessories

GC Capsule Applier

GC Cavity Conditioner

5.7ml liquid

GC Fuji ORTHO



Powder/Liquid

Intro Pack:

40g powder, 2 x 6.8ml liquid and accessories

Refill: 40g powder/6.8ml liquid

Accessories

GC Cavity Conditioner

5.7ml liquid

GC Fuji ORTHO BAND Paste Pak



Paste/Paste

Refill:

2 x 13.3g / 7.2 ml Paste Pak

Cartridge with Mixing Pad

Accessories

Paste Pak Dispenser

GC Asia Dental Pte Ltd

Changi Logistics Centre

19 Loyang Way #06-27 Singapore 508724

Tel: (65) 6546 7588 Fax: (65) 6546 7577

E-mail: gcasia@singnet.com.sg

www.gcasia.info

